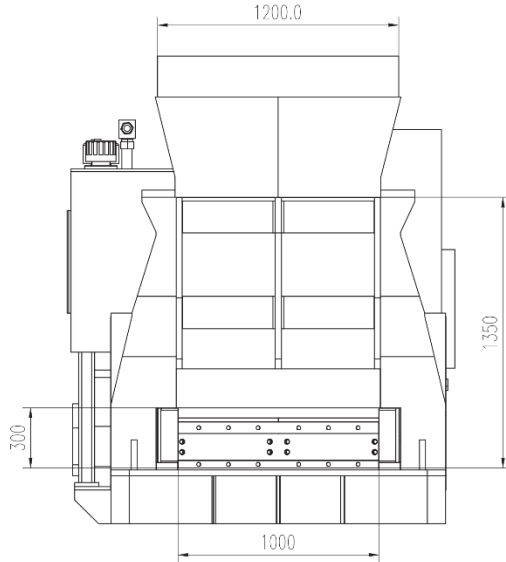


Scrap Shear MS-3150

Cutting Force	Blade length	Ejection height	Performance	Power	Weight
3150 KN	1000mm	300 - 500mm	3-4 t/h	44 kW	17 – 25t

Stationary versions



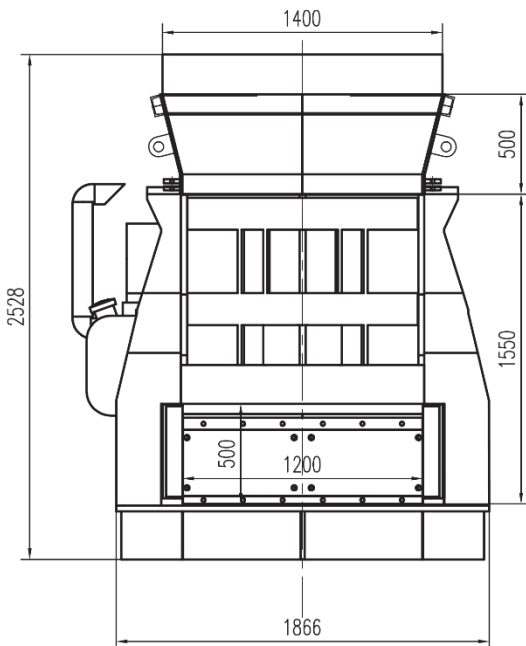
MS-3150e

Drive	electric
Ejection height	300mm / 400mm / 500mm
Power	44 kW
Weight	17t

MS-3150d

Drive	diesel engine
Ejection height	300mm / 400mm / 500mm
Power	75 HP
Weight	17,5t

Mobile versions



MS-3150me

Drive	electric
Ejection height	300mm / 400mm / 500mm
Power	44 kW
Weight	24,5t

MS-3150md

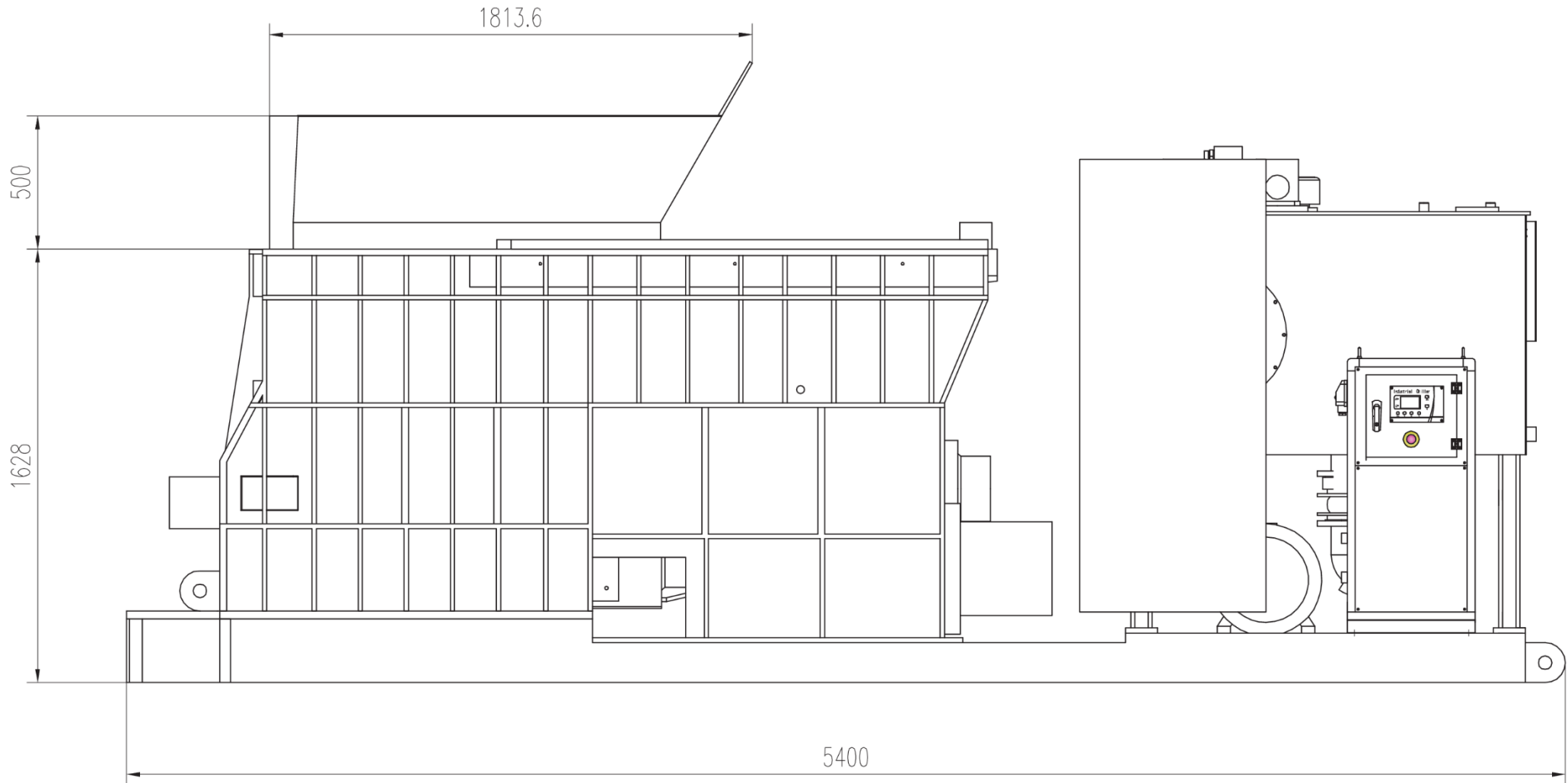
Drive	diesel engine
Ejection height	300mm / 400mm / 500mm
Power	75 HP
Weight	25t

MS-3150hd - Special design with hook load

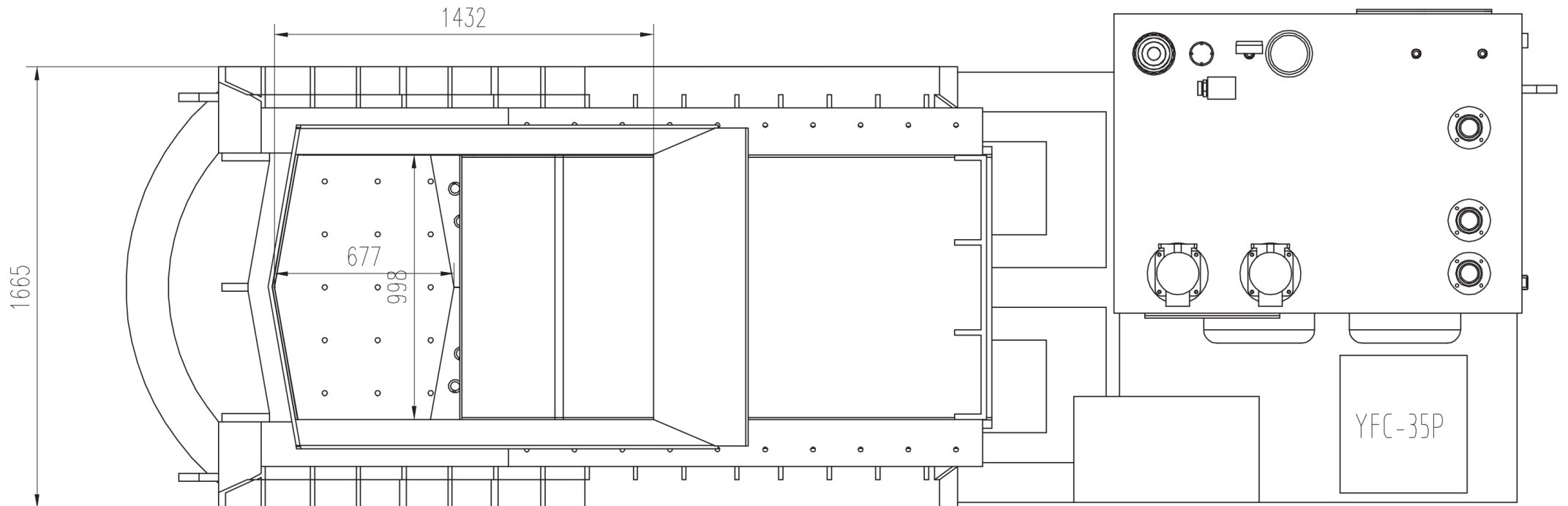
Drive	diesel engine
Ejection height	300mm / 400mm / 500mm
Power	75 HP
Weight	18,66t

For the electrically driven models 3150e and 3150me, a diesel generator can be selected as an additional option - this ensures flexible and cost-optimized operation

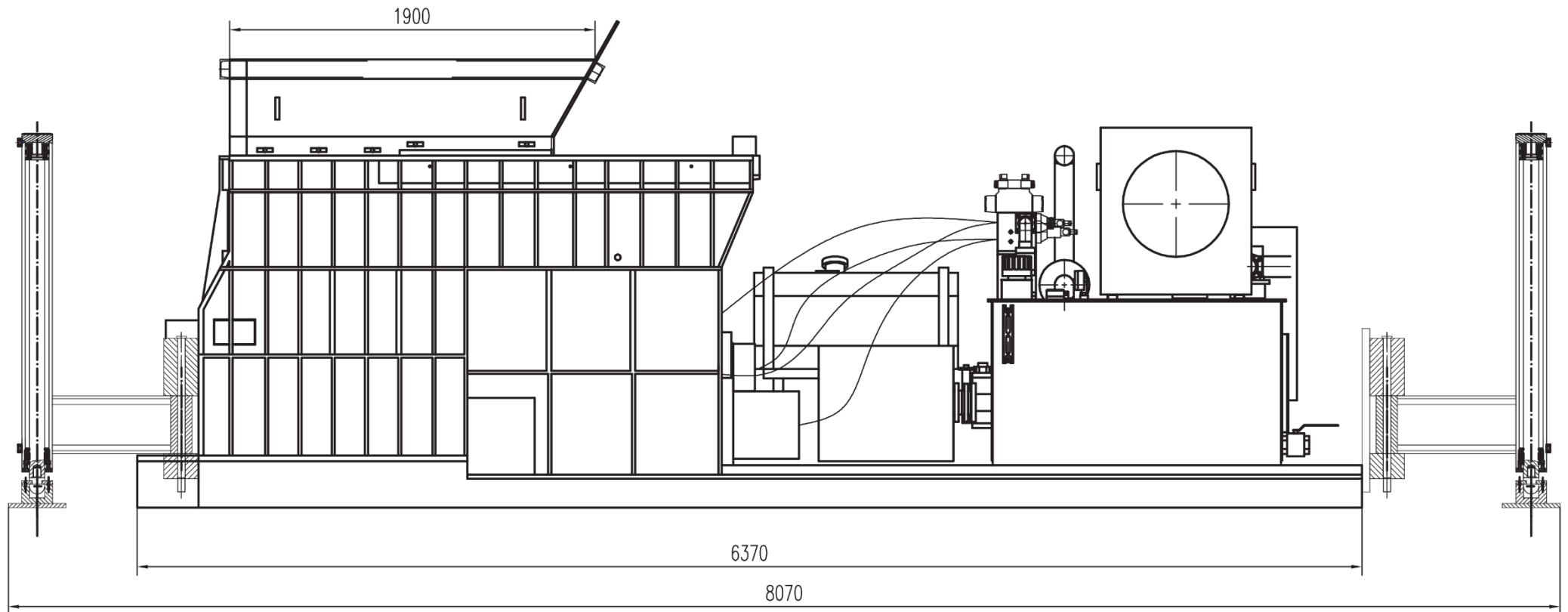
Scrap Shear MS-3150e – stationary version, electric, side view



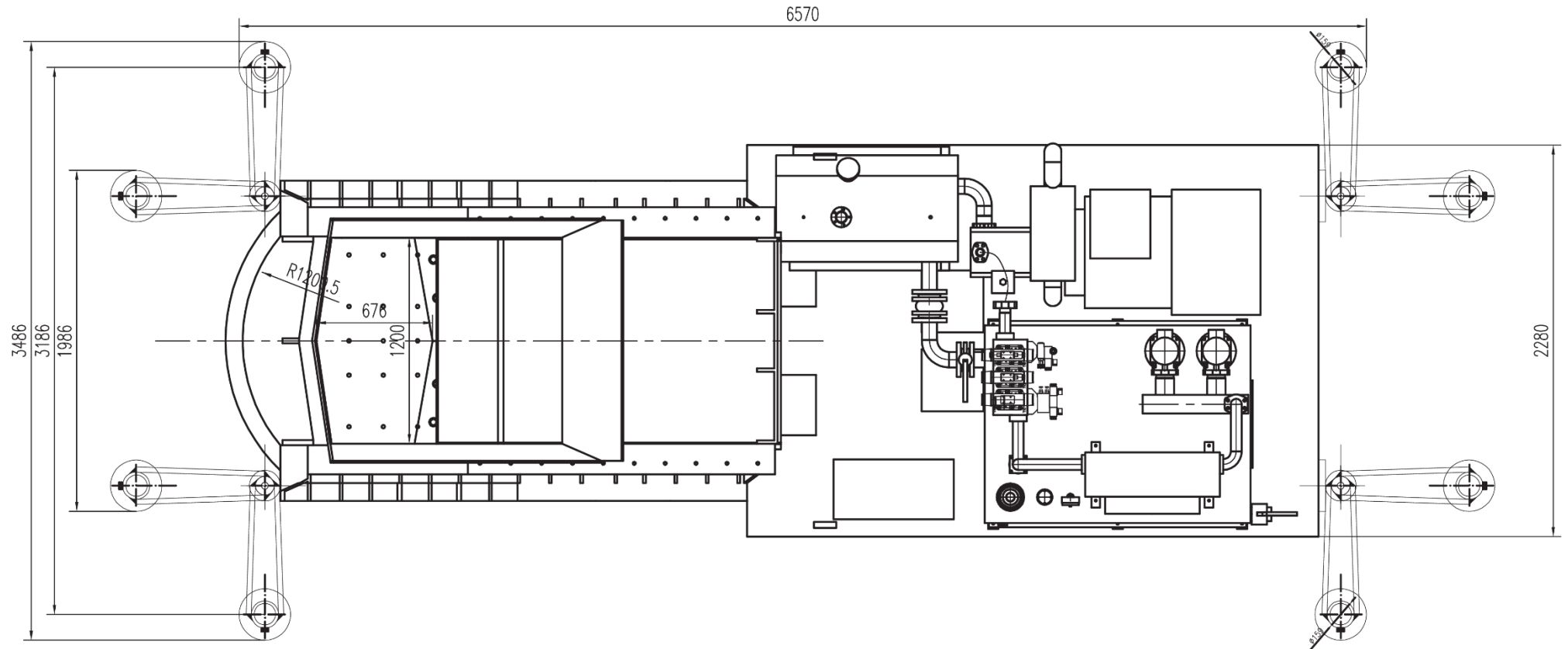
Scrap Shear MS-3150e – stationary version, electric, top view



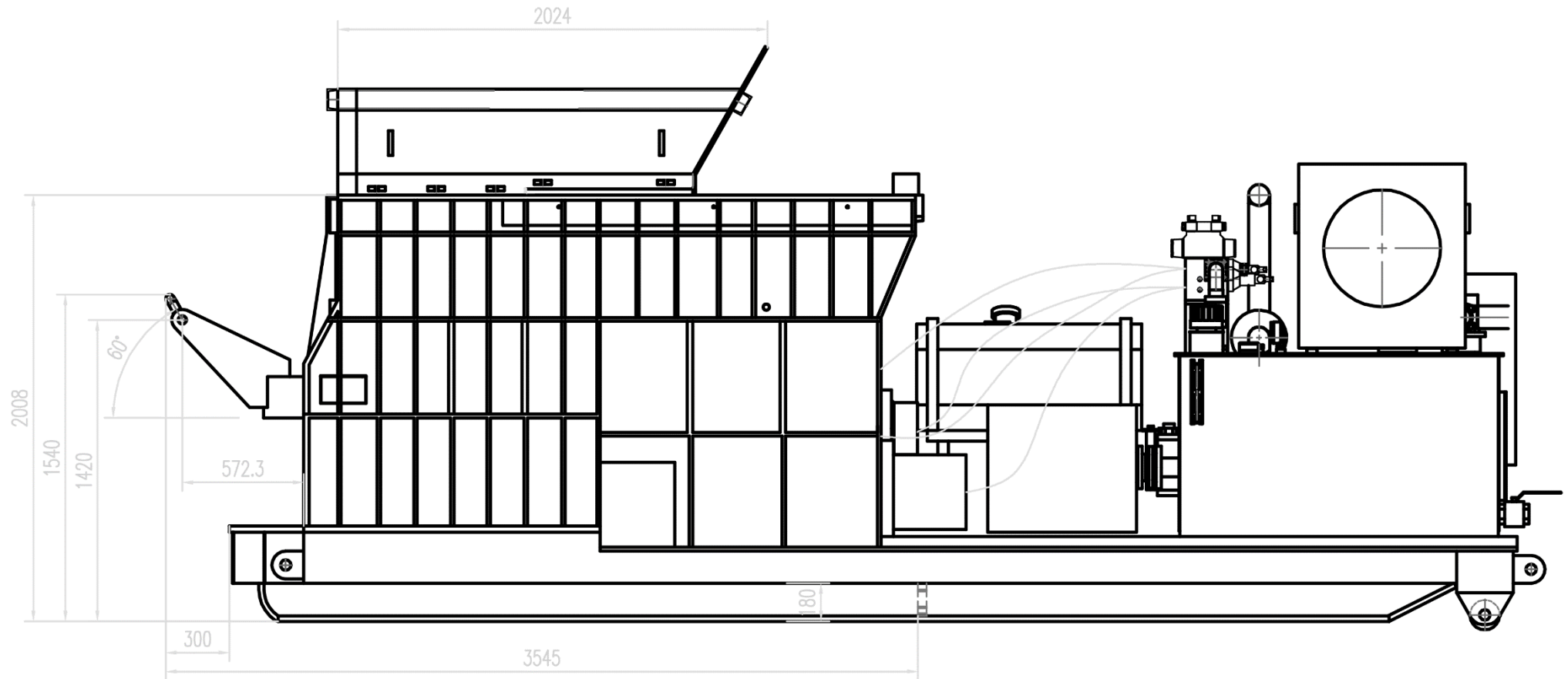
Scrap Shear MS-3150md – mobile version, diesel, side view



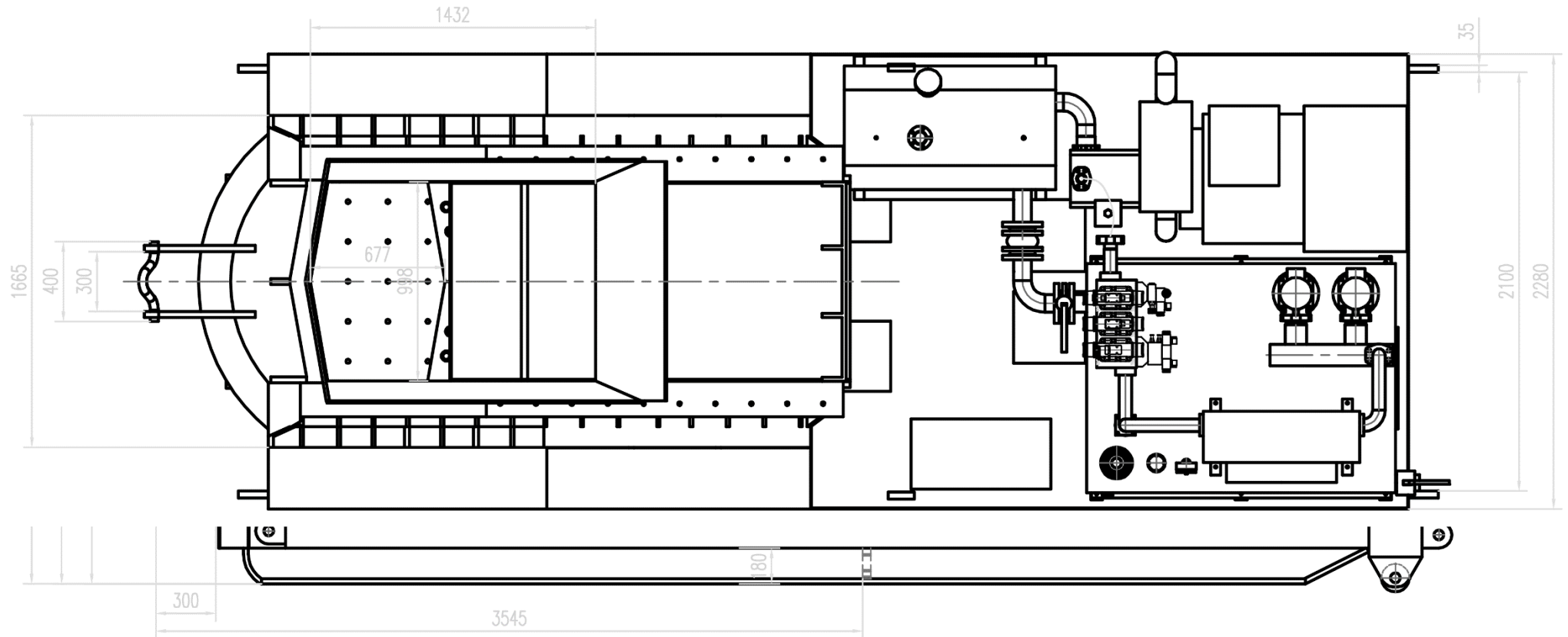
Scrap Shear MS-3150md – mobile version, diesel, top view



Scrap Shear MS-3150hd – special construction with hook load, diesel, side view



Scrap Shear MS-3150hd – special construction with hook load, diesel, top view



Advantages of the scrap shear

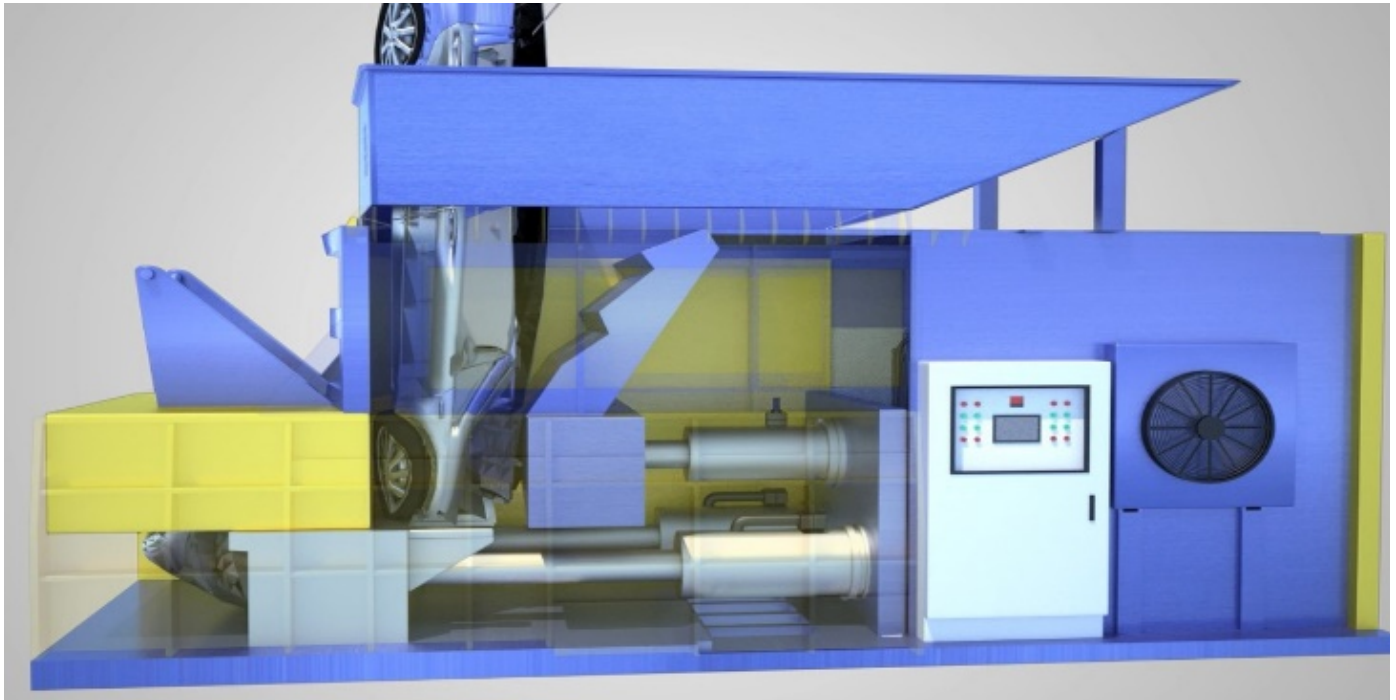
- The scrap shear enables economical scrap cutting due to the energy-saving automatic operation, saves costs and does not require a foundation.

Technical information

- The scrap shear can cut almost all types of scrap material. However, the machine is not recommended for cutting high carbon steel, such as axles, wire ropes, pig iron, spring steel plates, rails, alloy steel, hubs, etc - these hard materials will destroy the cutting blades.
- Production manufactured according to international standards. The specialized factories for the production of the scrap shears and their individual elements are certified according to ISO9001 and the CE certificate is available.
- Shear block, pressing device and the whole internal area of the scrap shear are made in HARDOX 450 wear resistance plates.
- Separate electrical cabinet for the different currents, components from Schneider Electronic and Siemens PLC.
- All contact surfaces are equipped with automatic lubrication to reduce equipment wear and increase equipment lifetime
- All high-pressure parts (piping, tank) are welded with forming, tested and acid treated to ensure the purity of the piping system



Function overview



Scrap is fed into the loading area with the help of an excavator. Due to the horizontal filling area and the scrap's own weight, it falls down into the loading chamber and into the cutting area. The scrap is compacted at the front wall and cut by the horizontally moving tool carrier via the knives at the front wall. While the tool carrier carriage moves horizontally, the processed material is pressed out via the knives on the front wall of the container. When moving back to the rear position, the loaded scrap moves by its own weight into the interior of the shear.

Technical details

No.	MS3150h Container Shear Technical parameter					Remarks
1	Cutting CYL	Model	YG280*220-680			2sets
		Nominal force	1539*2	Stroke	680mm	
2	Press CYL	Model	YG250/160-450			1set
		Nominal force	1227KN*1	Stroke	450mm	
3	Chamber size(L×W×H)(MM)		1800*1000*1881			
4	Feeding size (L×W×H)(MM)		1680*1400*800			
5	Working system pressure		21.5MPA			
6	Blade length		1000MM			
7	Cutting size		500mm			
8	Cutting frequency		3.5 times/min (unloading)			
9	Motor	Model	Y200L2-4	Power	22KW	
		Speed	1480R/MIN	Quantity	2sets	
10	Pump	Model	HY140Y-RP	Pressure	31.5Mpa	
		Outflow	140ml/r	Quantity	2sets	
11	Cooler	Air conditioning chiller				
12	Control	PLC Automatic+ touch screen +panel + remoter				